

BETHEL NOTES

In This Issue:

Page 2

- Prayer Requests
- Remembering the Children

Page 3

- Reminder from Pastor Jessie
- Ministry Fair
- TLC Job Opening

Page 4

- Giving Statements

Page 5

- Adult Retreats FLBC
- LPAs

Page 6

- Job Opening at Bethel
- Cereal Drive for FISH
- 1st Monday Quilters
- Voyagers in Support of Family Promise

Page 7

- Just for YOUTH:

Page 8

- Online Ministries
- Calendar of Events
- Contact information for Pastor Jessie.
- Updated Covid Guide



Sunday, August 29th

Healing Service

ISAIAH 41:1-10

PSALM 30

EPHESIANS 2:13-22

Today at Bethel come together in the presence of God's grace and ask for healing. Healing for our community, our state, our country, our world and ourselves. To what do God's people need healed today?

SERVING THIS SERVICE

Accompanist

Mary Seim, piano; Pastor Steve Nelson, guitar

Lay Assistant

Anne Vannatta

Usher

Walt Nuessle

Tech

Adam Elkin

Counters

Pam Dougherty and Greg Grosenick

**Join us Sunday at
9:30 in-person or
online bethelmt.org**

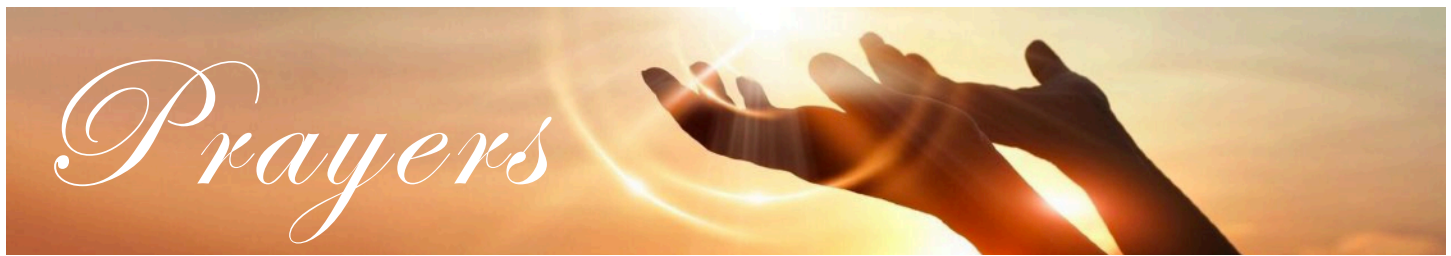
OFFICE HOURS:

MONDAY - THURSDAY 9:00 AM TO 4:30 PM CLOSED FRIDAY

OFFICE: (406) 761-1543

WEBSITE: WWW.BETHELMT.ORG

EMAIL: BETHELGF.CHURCH@GMAIL.COM



- ✦ Prayers of strength and leadership for **Gustavo Driau** as he continues as our Regional Representative for our Companion Synods in South America.
- ✦ Prayers of thanks for **Ed Pottratz** as he continues with treatment for cancer.
- ✦ Prayers of healing for **Lee Klette**, son of *Russ & Cheryl*.
- ✦ Prayers for healing and strength for **Katie Madsen**, *niece of Doug Sexe and granddaughter of Arlene Sexe* as she continues treatment for breast cancer and is responding well.
- ✦ Prayers for healing for **Steve Young**, *brother of Sue Hesse* as he continues with back issues.
- ✦ Prayers of support and healing **James Trunkle**, *friend of Dena Wagner-Fossen*, as he continues to manage health issues.
- ✦ Prayers of healing and support for **Bob Vander Aarde** as he continues cancer treatment.
- ✦ Prayers of support and healing for **Trudy and Earl Terwilliger** as they are managing with progression and changing of Trudy's cognitive health.
- ✦ Prayers of healing for **Arlene Sexe** as she continues treatment for cancer.
- ✦ Prayers of healing for **Leonard Murphy** after his second knee surgery.
- ✦ Prayers of comfort, support and healing for **Don Bisgard** as he continues to recover from surgery.
- ✦ Prayers of healing for **LaRae Veitch** as she recovers from knee surgery.
- ✦ Prayers of healing for **Dick Seim** as he undergoes medical testing.
- ✦ Prayers for strength and healing for **Eric Peterson** as he undergoes treatment for cancer.
- ✦ Prayers of healing and strength for **Julie Wolff** as she recovers in the hospital from a stroke.
- ✦ Prayers of healing for **Tony Marcson**, *brother-in-law of Jessica Crist*, with a new diagnosis of lung cancer.
- ✦ Prayers to **all students, teachers, and staff of the GFPS and Rural Schools** as they embark on a new school year. May it be a great one!



American Indian
Alaska Native
Lutheran Association



In honor and memory of the children of the First Nations people and of our Native children who never made it home, and for those still living the nightmare imposed on them as children of Canada and the United States we humbly ask our brothers and sisters of the church to hang an orange banner in the sanctuaries of your churches for 225 days. In remembrance and lament of each child that was thrown into those graves, and those yet to be discovered we honor each of their lives.

Reminder From Pastor Jessie



Greetings Bethel!

This Sunday's service will focus solely on healing. Last weekend we passed out rocks asking that you carry these rocks with you throughout the week and hold them especially as you pray. This Sunday we will bring these rocks forward, holding our hopes, our prayers, our pleas, and we will set them at the foot of the Cross. We will also have numerous opportunities for spoken prayer

requests, written prayer requests, and blessings with Holy Water from the Baptismal font. We will not do the traditional anointing with oil this time, as we want to maintain and respect our COVID protocols. I hope that you will join us for this special service on August 29th as I know it will be a time filled with meaningful prayer, song, and community.

Another reminder, join us September 12th for our ministry fair kicking off the beginning of the program year for us here at Bethel, meaning that most of our ministries will kick off sometime around that week. On the 12th we are asking that leaders of our many ministries set up a table in the fellowship hall with information about that ministry and how folks can get involved. I'll ask that you consider bringing a friend to church on September 12th, inviting someone new, or bringing an old friend that you haven't seen in a while. It can be hard to get involved in ministries and groups at first, so this will be a great opportunity to share about the many opportunities to get involved here at Bethel. Please be in contact with me or Tami about making sure we have a table for a ministry you lead and any other printouts or resources you might want folks to have for that Sunday.

I am overjoyed to begin this new program year with you, and can't wait to see how the next year unfolds in the coming months.

Peace +

BETHEL MINISTRY FAIR
Sunday, September
12th following
worship at 11:00 am
Bring a friend and
find out about all the
Fellowship
Opportunities at
Bethel!



TLC Center

TLC Center is looking for full and part-time Teacher Assistants who can help to create a positive and fun environment for children and incorporate educational

programs that assist in our children's development. A love of children is a must, and the right applicant will also be professional, patient and be a team-player. The job responsibilities include monitoring and teaching children in our program, developing or implementing a curriculum, and partnering with team members to enhance the learning environment at our school among other tasks. Previous experience in an early learning environment is preferred but not required. We are willing to train. Applicants must be willing to attend First Aid and CPR certification, attend trainings in person & online and must be available to work during our business hours. Pay DOE and position applying for. If you love working with kids, PLEASE APPLY IN PERSON at 1009 18th AVE SW in the Bethel Lutheran Church (WEST ENTRANCE). We are open Monday-Friday 7:00 AM- 6:00 PM.

Giving Statements Through July 2021 out This Week.

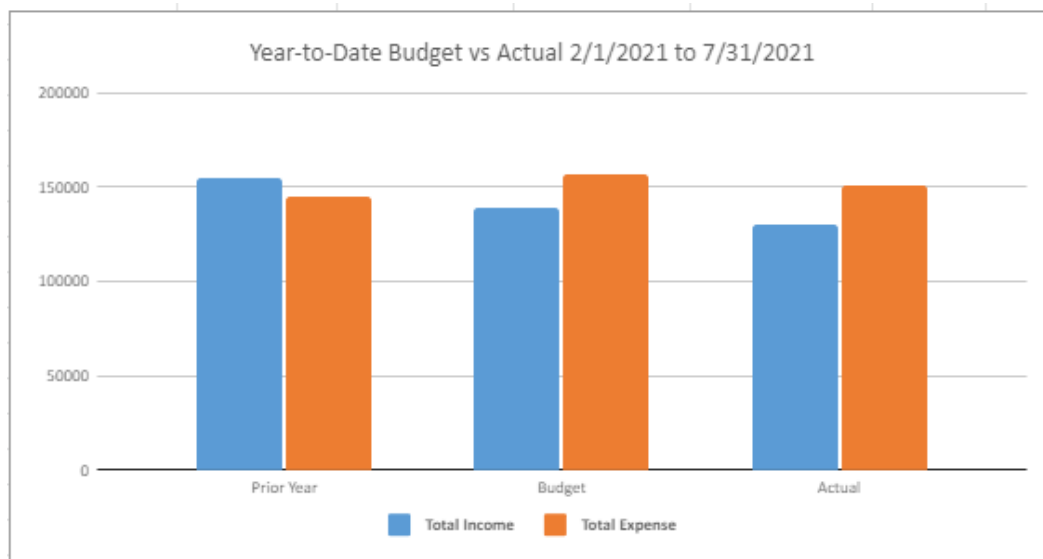
The Church Council has agreed to send statements twice a year - August & January.

If you have questions or concerns about this statement or other times throughout the year, please contact Dena Wagner-Fossen, Church Treasurer at bethelgf.council.treasurer@gmail.com and she will work with the staff to obtain answers.

****Coming Soon**** We are excited to notify you with our new Servant Keeper software, you can create an account and review your giving statements online. Watch for more information on this option in the coming months.

Overall giving ending July 31, 2021 shows the Bethel congregation continuing a tradition of generosity. Below is a quick update on the overall church budget.

| | Prior Year | Budget | Actual | Difference |
|----------------------|---------------|----------------|----------------|---------------|
| Total Income | \$ 154,693.87 | \$ 139,329.00 | \$ 130,177.76 | \$ (9,151.24) |
| Total Expense | \$ 144,852.36 | \$ 156,677.45 | \$ 151,158.45 | \$ (5,519.00) |
| Net | \$ 9,841.51 | \$ (17,348.45) | \$ (20,980.69) | |



- While operating expenses remained within budget, current expenses are about \$20,000 higher than income received year-to-date. This is mainly due to two items that were carry-overs from last year's budget. The first being a \$9000+ transfer of the Jean Humphrey's Memorial Campership Fund out of our checking account and into our invested account. The other being a \$5000 invoice for the ADA doors was not received until this spring, so was paid out of this year's budget as well. The final difference is with the building loan and interest in the budget, we are now seeing those expenses and income tracked in the budget.
- Income through the year has been extremely generous and has not only supported our general operating budget, but our ELCA partnerships and the continued support of Family Promise, World Hunger, LOGOS, FLBC camperships, etc.

Thank you for your continued generous giving.

Adult and Family Retreats Upcoming At FLBC This Fall

FLBC is currently hiring for our year-round staff!

We are seeking a Wilderness/Environmental Education Director and Community Staff. Interested in being a part of the ministry of FLBC or know someone who would be a good fit?

Visit <https://flbc.net/employment/#yearround> to see the full job descriptions and instructions for applying.

Upcoming FLBC Retreats & Events

Visit <https://flbc.net/annual-programming/> to learn more about our year-round programming and find information on registering for each of these retreats.

Fall Harvest Festival & Auction

October 9th, 2021

Help FLBC raise funds to ensure no one is turned away due to inability to pay through camperships! This special event also coincides with the FLBC Annual Meeting (taking place at 2:30 pm on Saturday, 10/9).

Crazy About Quilting & Crafting Retreat - Register by October 21, 2021

November 4-7, 2021

Bring your quilt and craft projects and work alongside friends old and new on the west shore of Flathead Lake.

<https://flbc.net/annual-programming/quiltcraft-retreat/>

Advent "Preparing for Christmas" Retreat - Register by November 19, 2021

December 3-5, 2021

Prepare for the Christmas season by taking intentional time to slow down and enjoy the season. Make awesome crafts, cut your own Christmas tree, and soak in time for worship and prayer this Advent. <https://flbc.net/annual-programming/advent-retreat/>

L.P.As LEADING OUR CONGREGATION

A Lay Pastoral Associate in the Montana Synod is a congregational lay person who has received religious, educational training, through the Montana Synod, in order to provide (in most cases) short term pulpit supply (ie, preaching) when the pastor is away, or if a congregation is without a pastor. Their role is to fill in for the basic pastoral duties such as providing Word and Sacrament, communion, and other roles as approved by the Bishop. LPAs are not authorized to preside at weddings.

Interested in becoming an LPA?

1. Talk to your church pastor. Talk about what it means to fill in for him or her and the traits it takes to provide pastoral leadership (albeit, temporary).
2. If your church does not have a pastor, feel free to contact our office. We'll put you in touch with someone who can shed some light on the role of an LPA.
3. Have your church pastor contact Bishop Jungling or Rev. Jason Asselstine, Assoc. to the Bishop via email or phone call. This contact and conversation will be your pastor's recommendation for your participation in the MT Synod LPA program.

After approval from the Bishop (to enter the program), please ensure you have the following items to our Synod office at least 3 weeks prior to the class start date (our staff admin person will send you the paperwork to begin the process):

LPA CLASS THIS OCTOBER!

A new class of LPAs will be starting up this fall in Great Falls. If you have a candidate in mind from your congregation, or would like more information, please call the Synod office 406-453-1461 or email Candi by clicking this [link](#)

[Click here for the LPA Handbook](#)

Job Opening At Bethel Church Custodian

Bethel is hiring a part time (30-hour per week) position to clean the church, do some maintenance, lawn and property care and coordination with vendors and repair services.

For a detailed job description and job application :

- click [here](#)
- go to our website under About Us/ Job Openings

For more information call the Bethel Office 761-1543.



FISH! is low on boxed cereal. For the month of August, we will be holding a box cereal drive to fill their shelves. Bring cereal of your choice to Bethel and we will deliver to FISH!

1st Monday Night Quilters

: 1st Monday Night Quilters will meet Monday, September 13, 2021, 6-8 p.m. at New Hope Lutheran, 3125 5th Ave. So. Again, we will tie the quilts before the last step of binding them is done. Thank you to Peggy for binding the quilts made in August.

Come and see all the tops ready to be made into quilts. Reminder – park in the alley. If you have questions, call 799-0100.



Family Promise Night at the Voyagers Baseball Game.

Monday, August 30th 7:00 pm

50/50 proceeds go to Family Promise.

Judy Statham will have tickets for sale this Sunday after worship.



IT'S ALMOST TIME FOR LOGOS!!!!

Our Logos Youth Ministry will be starting soon.

Important dates!

August 27th High School Logos (9th - 12th grades) Lock In 7pm Friday to 9 am Saturday. This night we will register for HS Logos and get information regarding the 2022 ELCA Youth Gathering in Minneapolis, MN. Email [Colter McCarty](mailto:Colter.McCarty@bethel.lutheran.church) for more information or to RSVP for your student.



September 8th Middle School/Confirmation Parent Night - at Bethel, a BBQ night to register for Middle School/Confirmation 7th and 8th graders and their parents.

September 15th Logos/Parent Night for Pre-K through 6th grade - this will be located off site and will be announced later. We will register and have a short meeting for parents and youth will meet their teachers for this year.

First Night of Logos for ALL youth Wednesday, September 22nd

5:30 pm to 7:30 pm Pre-K through 8th Grade

High School Logos will be determined by group on Lock In Night August 27th.

Health and Safety

Following the direction of our Church Council and the GFPS, we are strongly recommending that masks be worn by Logos Youth and volunteers over the age of 5. They are not required.

We will be keeping youth within their cohort group for all activities including meals. It is our hope we will be able to move to open seating once positive infection numbers decline.

If your child is not feeling well, we would ask you give them the rest they need and keep them home.

We feel so very blessed to be able to offer Logos and we are looking forward to a great year!

For Full Details, copy of the handbook, fees, and online registration go to our [LOGOS Webpage](#)

MINISTRIES MEETING ONLINE

ELECTRIC CITY BIBLE STUDY

What a great way to connect with one another! Join our bible study via Zoom Tuesday mornings at 7:00 am. Contact Laurie Turner at loli51gus@icloud.com for a link to join the meeting.

MEN'S BREAKFAST

Join us for a fun and engaging conversation, and insightful discussion of each week's Lectionary texts as we meet both in person and via Zoom, Tuesday mornings at 7:00 am. Contact Dave Scholten at dscholten@dlsconsulting.net for a link to join the meeting or for more information.

Men's Breakfast will resume September 14th. .

HOPE CIRCLE

This group meets once a month usually on Thursday evenings. Bible study and fellowship are celebrated with this group of ladies. Contact Laurie Turner at loli51gus@icloud.com for a link to join the meeting and Terry Korpela to be on the group email for meetings and prayer requests terry.korpela@gmail.com.

Hope Circle will resume in September on Zoom. Date to be announced soon.

CALENDAR OF EVENTS

Tuesday 8/31

- Electric City Bible Study, Zoom meeting 7:00 am

Friday 9/3

- Bethel office is closed.
- Aitz Chaim Shabbat 6:00 pm

Saturday 9/4

- Close Knit meets in Fellowship Hall 9:00 am

UPCOMING EVENTS

Sunday 9/5

- Sunday Worship in-person & live stream 9:30 am.
- World Hunger Sunday

Monday 9/6

- Labor Day, Bethel Office Closed
- Aitz Chaim celebrates Rosh Hashanah 6:00 pm

Tuesday 9/7

- Electric City Bible Study, Zoom meeting 7:00 am
- Rosh Hashanah continues 10:00 am

Wednesday 9/8

- Confirmation/Middle School Logos Parent Night at Bethel 5:30 pm

Thursday 9/9

- Exec Board Zoom meeting 5:30 pm

Friday 9/10

- Bethel office is closed.

Pastor Jessie Obrecht

Contact information:

Email: bethelgf.pastor@gmail.com

Bethel 406-761-1543 ext 202

Covid Guidelines for Worship as of August 10, 2021

Masks are strongly recommended, but not required.

Continue Physical Distancing

Coffee Hour on hold

If you have a fever or are feeling unwell, please take care of yourself and join us online for worship.