

BETHEL NOTES



In-person worship is on hold. Please join us Sunday at 9:30 am bethelmt.org

SERVING THIS SERVICE

ACCOMPANIST - MARY SEIM, PIANO

PASTOR STEVE NELSON, GUITAR

VOCALIST - JEFF, MELODY AND JENNIFER SKOGLEY

LAY ASSISTANT - WALT NUESSELE

TECH - COLTER MCCARTY

SUNDAY COUNTERS - PAM DOUGHERTY

DENA WAGNER FOSSEN

In This Issue:

- Prayer Requests
- Altar Flower Sign Up 2021 Pg 2
- Christmas Eve Service Pg 3
- Christmas Giving - ELCA Good Gifts and Youth Resource Center Pg 4
- Christmas Star photo
- FLBC Ski Retreat
- ADA Door openers Pg 5
- Thank You from FISH!
- Daily Texts 2021 are in
- 1st Monday Quilters Pg 6
- NRIT Classes
- Epiphany Of Our Lord Service
- Interfaith Opportunity Pg 7
- Online Ministries
- Calendar of Events
- Contact info from Pastor Trina

Sunday, December 27th

The First Sunday of Christmas

ISAIAH 61:10--62:3

GALATIANS 4:4-7

LUKE 2:22-40

OFFICE HOURS:

MONDAY THROUGH THURSDAY 9:00 AM TO 4:30 PM CLOSED FRIDAY

OFFICE TELEPHONE: (406) 761-1543 WEBSITE: WWW.BETHELMT.ORG EMAIL: BETHELGF.CHURCH@GMAIL.COM



- ✦ Prayers for **Faith Crouch** (granddaughter of Bernice Johnson) who is home and doing well.
- ✦ Prayers of joy for **Presley Jean Birnel** 9 month old, great granddaughter of Bernice Johnson who is had surgery and is back home and doing well!
- ✦ Prayers of thanks for **Ed Pottratz** as he responds well to cancer treatment.
- ✦ Prayers of healing for **Lee Klette**, son of Russ & Cheryl.
- ✦ Prayers for God's continued healing for **Linda Juvik** (sister of Sandy Bechard) as she has completed her treatments for cancer and continues to heal.
- ✦ Prayers for healing and strength for **Katie Madsen**, niece of Doug Sexe and granddaughter of Arlene Sexe as she is undergoing treatment for breast cancer.
- ✦ Prayers for healing for **Steve Young** (brother of Sue Hesse) as he recovers from back surgery.
- ✦ Prayers of health and healing **Kathy Meier** (friend of Dena Wagner-Fossen) as she prepares for knee surgery scheduled for January. Also for Kathy's father **James Trunkle** as he is undergoing medical testing.
- ✦ Prayers of healing and strength for **Ray Poser**, Connie Titcomb's brother, who has been admitted to the hospital in Billings with Covid 19.
- ✦ Prayers of healing for **Pam Hanson Alfred** as she continues treatment for cancer.
- ✦ Prayers of healing and support for **Bob Vander Aarde** as he undergoes cancer treatment.
- ✦ Prayers of healing and support for **Robert Dillard**, Trudy Terwilliger father who is recovering from Covid 19.
- ✦ Prayers of support and joy for **Earl and Trudy Terwilliger** who's Covid tests came back negative.



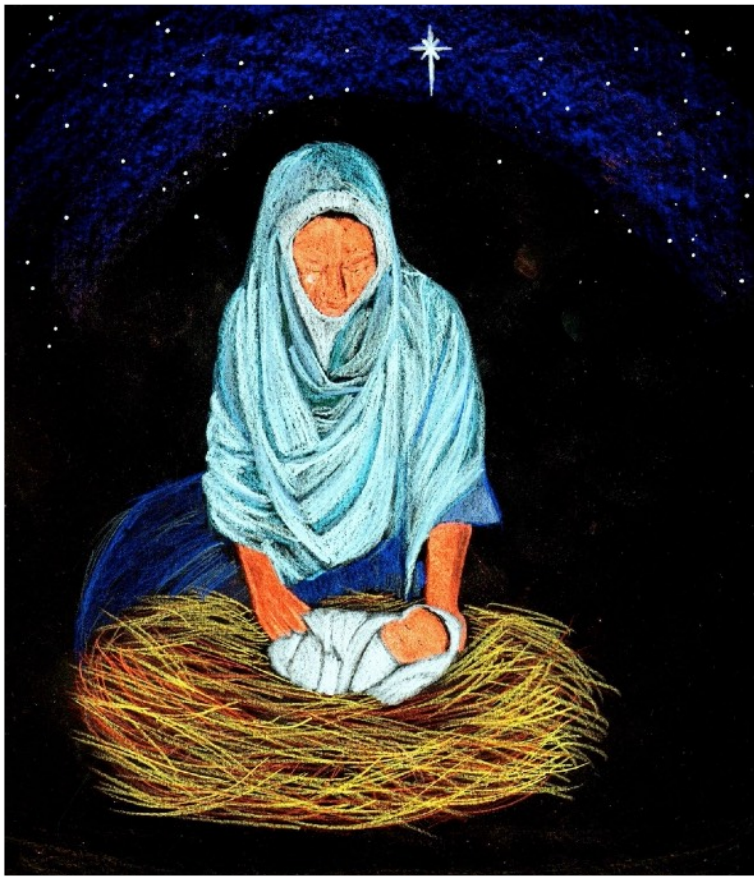
Altar Flower Sign Up 2021

Altar Flowers are sponsored by members of Bethel, who can honor special people or events such as birthdays, anniversaries, or other special days. The donation amount is \$15.00 per Sunday and can be mailed in or paid through our online donation at bethelmt.org.

To sign up to sponsor the altar flowers for 2021 are available. Since we are not meeting in-person the link to sign up online is below. If you prefer, call or email Tami to sign up and reserve your spots.

[Click here to link to online sign up](#)





[link to the Christmas Eve Service](#)
will be available at 5:00 am on December 24th.

[link to the bulletin](#)

Christmas Eve December 24th

MICAH 5:2-5A

LUKE 2:1-7

LUKE 2:8-14

LUKE 2:15-20

MATTHEW 2:1-11

JOHN 1:1-14

Join us on Christmas Eve as we celebrate the birth of our Savior! We celebrate the Sacrament of Holy Communion and light candles during Silent Night. Click the [link here](#) for instruction on how to set your communion table and get any candles you wish to light ready. Sing along with all the beautiful music and we thank those who shared their talents and strengths for make this service happen. And a special thank you to Colter McCarty for putting it all together. We hope you enjoy the service. Until we can be tougher again, have a Blessed Christmas.

SERVING TONIGHT

Accompanist	Mary Seim - hymns	Lynn Ryan - duet	Connie Titcomb - choir
Vocals			
	<i>O, Come All Ye Faithful</i>	Patrick, Lynn, Kian, Kendall, & Kari Ryan	
	<i>Oh Little Town of Bethlehem</i>	Dave and Tamy Scholten	
	<i>Away In A Manger</i>	Kian, Kendall, & Kari Ryan	
	<i>Hark! The Herald Angles Sing</i>	Pastor Trina, Dennis Trotter, Dan, Jenny, Claire Woods	
	<i>Go Tell It On the Mountain</i>	Jo Ann Dullum	
	We Three Kings of Orient Are	Patrick and Lynn Ryan	
	Silent Night	Jubilate Choir	
	<i>Joy To The World</i>	Pastor Trina, Dennis Trotter, Dan, Jenny, Claire Woods	
Brass Ensemble	Dave Scholten, Lynn Ryan, Kurt Mueller, Adam Elkin & Jeff Skogley		
Tech	Colter McCarty		
Readers	Walt Nuessle, Andrew Dullum, Sue Hesse, Carrie Ann Elkin, and Jim Carlson.		

Christmas Giving



Donate To Alliance For Youth and reveal the candy cane!

Each level of the candy cane represents one set of table and six chairs. With each donation we can reveal a little bit more.

See below to donate today! So far we have 5 1/2 whole sets!

To donate to either or both of these charities, go online to bethelmt.org and click on online giving.

Under other: note where we are to direct your donation dollars or mail in your donation all with the slip below to Bethel Lutheran Church Attn: Christmas Giving 1009 18th Ave SW Great Falls MT 5404.

Please makes checks to Bethel Lutheran Church.



Healthcare



Christmas Gifts

Your Name: _____

Donation for:

☐ Alliance for Youth , amount \$ _____

☐ ELCA Good Gifts, amount \$ _____ for:

_____ Global Barnyard _____ Water _____ Health Care

Cut out this slip and mail in with your donation.

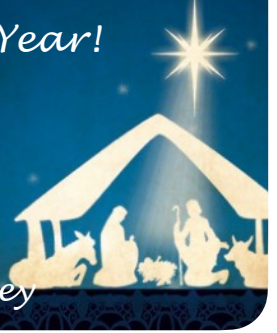



The Christmas Star. It may have been too cloudy here to see it, but a friend of Greg Grosenick, Marc Maevers had a beautiful view from Laytin, Utah and shared his photograph.


Merry Christmas from
the Staff at Bethel
Lutheran Church

*May the blessings of the Lord
shine on you this Christmas and
throughout the New Year!*

*Blessings to you!
Pastor Trina Johnsten,
Bonnie Sears,
Tami Grosenick,
Dawn Arves, & Jeff Skogley*



 flatheadlutheranbibleca • Follow ...

 flatheadlutheranbiblecamp Ski & Snowboard Retreat guests can spend the day cruising at Blacktail Mountain Ski Area or Whitefish Mountain Resort (Big Mountain), or hanging out at camp (cozy in front of the fire, helping with a service project, maybe even sledding!)

Join us January 8 - 10, 2021 for a fun winter getaway! Visit <https://flbc.net/annual-programming/ski-retreat/> for more info!

3d

38 likes
3 DAYS AGO

Log in to like or comment.

New Auto Door Openers Installed on the Front Doors!

We now have ADA Door openers on the front doors of the church with door assist. You can utilize the auto openers by pressing the button to open the doors or give the doors a pull and the door assist will kick in and open the door with a seven second delay before the door closes.

We hope you find this addition to our buildings useful when we once again resume worshipping together.

A THANK YOU FROM FISH!

THANK YOU

God bless you for your support of the FISH program. Thank you for the many ways in which you have helped FISH this year: volunteering during your FISH week; giving of financial gifts; offering prayers for our success; donating food and contributing to the Town Pump Challenge. Because of your generous giving, Town Pump will be matching \$20,000 this year.

Due to COVID19, FISH has had to adjust. We are very careful with mask wearing, social distancing, installing a new plastic shield and only having one client at a time. We hope that the Loaves & Fishes dinner can be held again in 2021.

This New Year as you consider all of the blessings that have come to you through Jesus, God's perfect gift, remember that it is but a taste of the good things yet to come.



1st Monday Night Quilters

The 1st Monday Night Quilters WILL NOT meet Monday, January 4, 2020, 6-8 p.m. at New Hope Lutheran due to COVID numbers increasing. We hope to resume again Monday, February 1, 2021. Thanks to all who have been cutting squares, and sewing tops. We will be in good shape with a plentiful supply when we resume after this two-month break. Questions – call Trudi 799-0100.

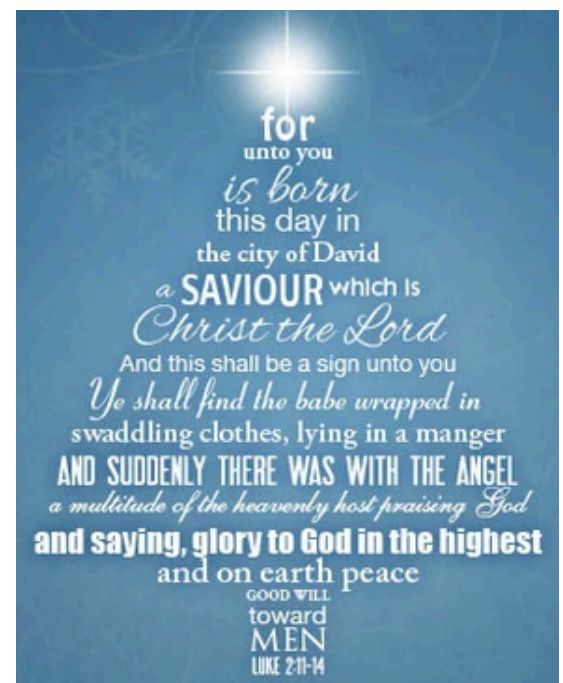


Daily Texts 2021

The new 2021 Daily Texts have arrived and are ready for pick up in the Narthex.

This year's focus, "Behold, I am doing a new thing; now it springs forth, do you not perceive it? I will make a way in the wilderness and rivers in the desert." ~ Isaiah 43:19 (ESV)

The cost of the text did go up a little this year. As in years past, we would be delighted for the first copy you take be with our compliments. If you would like additional copies and are able to help cover the cost of the texts we would appreciate a suggested donation of \$8.00 per text, or whatever you can afford. If you are unable to come in to pick up your copy, please call Tami in the office 406-761-1543 and we will be happy to mail a copy to you.



Education Opportunities



Winter Thursdays (and 1 Tuesday) with NRIT

Join us for the following Zoom classes in 2021:

Covenant as Care: Cherishing Our Relationship with God and Each Other

Explore this year's Lenten texts from the Old Testament with Rev. Dr. Julie Faith Parker.

Dr. Parker is highly recommended by Dr. Mark Allen Powell and also our own Pr. Kim Peterson (Trinity in Choteau) who studied with Dr. Parker at Trinity Lutheran Seminary in Ohio.

Thursday, Jan 14 10am to noon (lunch) 1pm to 3pm

Grief: A Class in 3 Sessions

Jan 21 Class 1 – Complicated Grief, an overview of current grief theory and discussion of grief with Monica Trimble, MSW, LCSW 10am to Noon

Jan 26 Class 2 – Congregational Grief, a look at how loss and grief impact congregational life with Rev. Michael Girlinghouse, Bishop of the Arkansas-Oklahoma synod. 1pm to 3pm

Feb 4 Class 3 – Traumatic Grief, focusing on pastoral care during trauma and traumatic deaths in congregational and clinical settings, led by Pastor Grant Barnett Christenson, pastor and hospital chaplain in Bozeman. 10am to Noon

Classes are two hours each. Registration includes all three classes. Attend as you are able.

Congregational Vitality

Learn more about this process happening within the Montana Synod. (More info coming soon.)

Thursday, Feb. 11 10am to Noon

To register: www.montanasynod.org – Click on the “Faith Formation” tab, top of the page and click on NRIT. Scroll down to find these class.

THE EPIPHANY OF OUR LORD



*A Worship service led by the
ELCA bishops elected in 2019*

Wednesday, January 6, 2021

8pm Eastern | 7pm Central

**LIVE on synodical Facebook pages
and websites across the ELCA**

Interfaith Opportunity

Colleagues and friends,

We have an interfaith group of clergy and faith leaders that are organizing across the state with the intent to bring faith values and voices to the state legislative process this upcoming session starting in January. Our goal is to build relationships with legislators, speak to issues that matter to us, and follow particular bills with the intent of giving voice as needed. We are looking for two things:

1. Faith leaders who are interested in this work (perhaps yourself, or leaders in your congregation, or colleagues in your town)
2. ELCA, mainline, or other faith identified legislators who we can be in relationship with.

If you are interested in being in the work or have names of leaders or legislators please contact John Lund at John.lund@mso.umd.edu or 406-396-4974.

MINISTRIES MEETING ONLINE

ELECTRIC CITY BIBLE STUDY

What a great way to connect with one another! Join our bible study via Zoom Tuesday mornings at 7:00 am. Contact Laurie Turner at loli51gus@icloud.com for a link to join the meeting.

MEN'S BREAKFAST

Join us for a fun and engaging conversation, and insightful discussion of this week's Lectionary texts as we meet via Zoom, Tuesday mornings at 7:00 am. Contact Dave Scholten at dscholten@dlsconsulting.net for a link to join the meeting.

WEEKLY TEXT BIBLE STUDY WITH PASTOR TRINA

This bible study is offered on Wednesdays at 10:00 am and Thursdays at 7:00 pm (except the Thursday when Hope Circle meets). This group studies the lessons for the upcoming Sunday together. Each week stands alone, you can join anytime! No experience necessary! Contact the Bethel office bethelgf.church@gmail.com for a link. **ON HOLD UNTIL JANUARY 6TH & 7TH**

HOPE CIRCLE

This group meets once a month usually on Thursday evenings. Bible study and fellowship are celebrated with this group of ladies. Contact Laurie Turner at loli51gus@icloud.com for a link to join the meeting and Terry Korpela to be on the group email for meetings and prayer requests terry.korpela@gmail.com.



Calendar Of Events

Tuesday 12/29

- Electric City Bible Study, Zoom meeting 7:00 am
- Men's Breakfast, via Zoom 7:00 am

Thursday 12/31

- New Year's Eve

Friday 1/1/2021

- Happy New Year 2021! Bethel office is closed.

UPCOMING EVENTS

Tuesday 12/29

- Electric City Bible Study, Zoom meeting 7:00 am
- Men's Breakfast, via Zoom 7:00 am

Thursday 12/31

- New Year's Eve

Friday 1/1/2021

- Happy New Year 2021! Bethel office is closed.

Interim Pastor Trina Johnsten

Contact information:

Email: bethelgf.pastor@gmail.com

Bethel number non-emergencies:

406-761-1543 ext 202

Cell number for emergencies: (402) 984-4306